

DWA regional group north-east

German Association for Water, Wastewater and Waste

Lahti, 20.09.2016

Sandra Haase

DWA, regional group north-east, Halberstädter Str. 40a, 39112 Magdeburg

E-Mail: dwa@dwa-no.de, sandrahaase@freenet.de ; Tel.: +49 391 / 9901 8292; Fax: +49 391 / 9901 8294

Regional group north-east Team



Matthias Barjenbruch

chairman of the
regional group



Ralf Schüler

managing
director

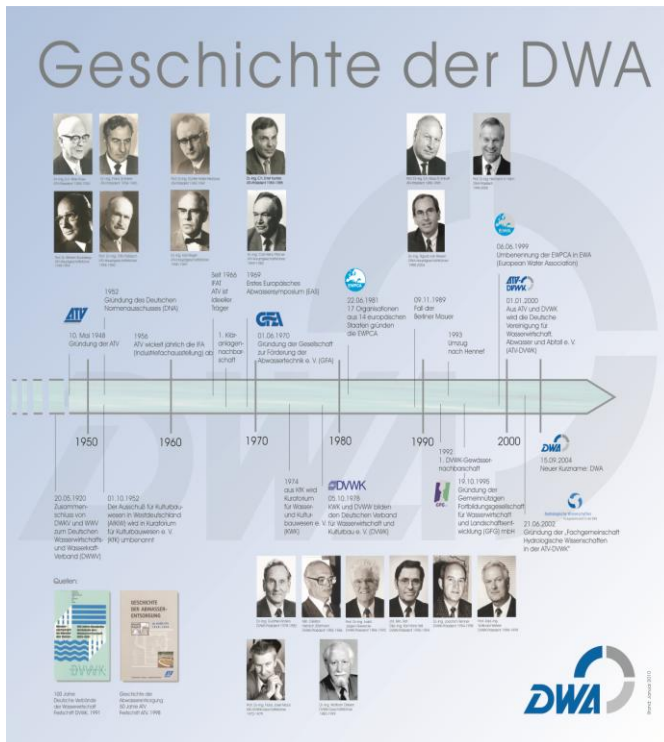


Martin Hesse



Sandra Haase

DWA History



- 1948 Foundation ATV
- 1978 Foundation DVWK
- 2000 Fusion ATV-DVWK
- 2004 Renaming in DWA

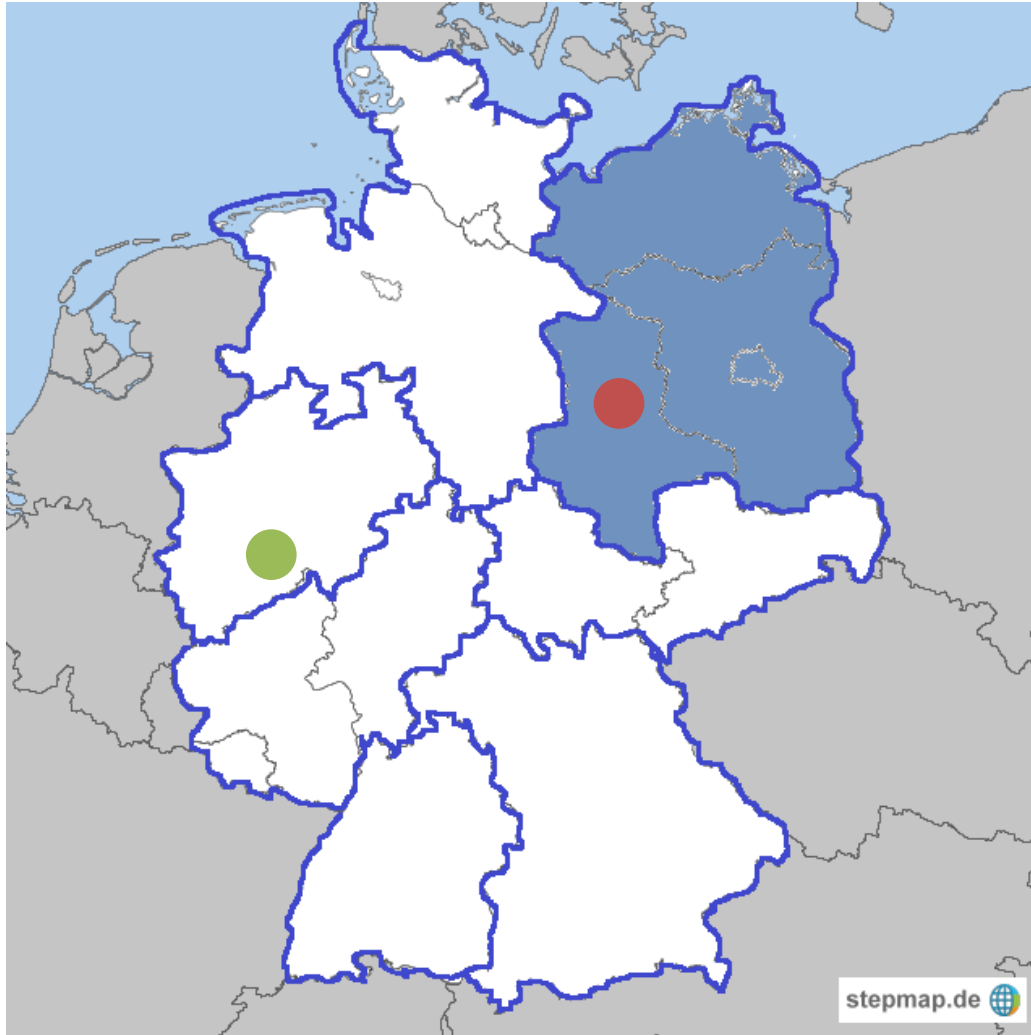
Technical-Scientific Association - Non Government Organization

- ca. 14.000 Members
- ca. 140 Employees
- ca. 380 Committees with ca 2.160 honorary employees



DWA national head office (Heenef)

DWA in Germany



- 7 regional groups
 - North
 - North-east
 - North Rine-Westphalia
 - Saxony/Thuringia
 - Hessia/Saarland/Rhineland Palatinate
 - Baden-Wuerttemberg
 - Bavaria
- Regional group north-east ●
 - Magdeburg
- DWA national head office (Heenef) ●

DWA

core competencies



DWA

core competencies



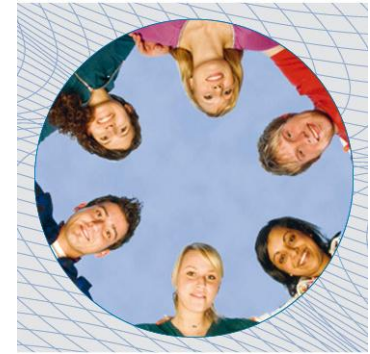
Information



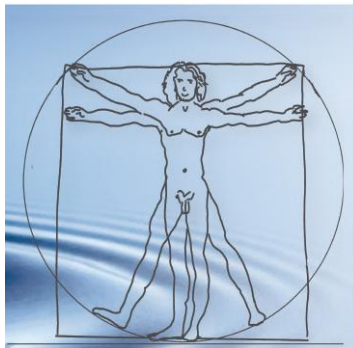
Network



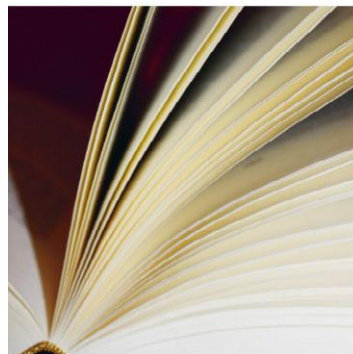
Membership



International



Research



Rules and
Standards



Training



Certification



Information

INFORMATION

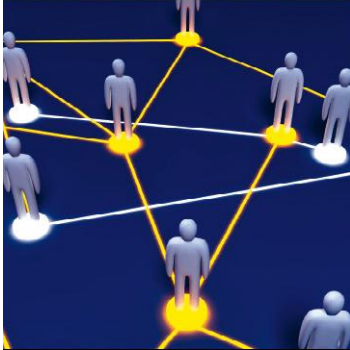
The issues of water and waste concern everybody – politicians, citizens, professionals, educators and students. We explain the technology and development in a way that everyone understands.



Network

NETWORK

We offer specialists a platform for dialogue. Committees, forums and conferences provide scope for contact and exchange. “Members know more” – that is the motto of the DWA.



Membership

MEMBERSHIP

By means of corporate or personal membership you too can become part of this community.



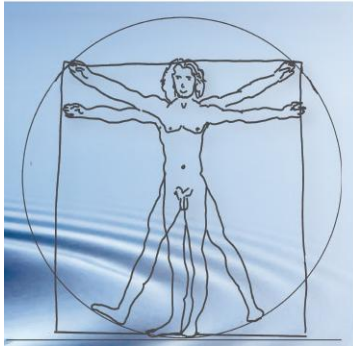
International

INTERNATIONAL

German experiences are in demand from abroad. We explain, advise and give support.

- participation in
 - CEN (European Standardisation)
 - EWA (European Water Association)
 - IWA (International Water Association)
 - German Water Partnership





Research

RESEARCH

Research topics and results are pooled and the transfer to and from practice secured.



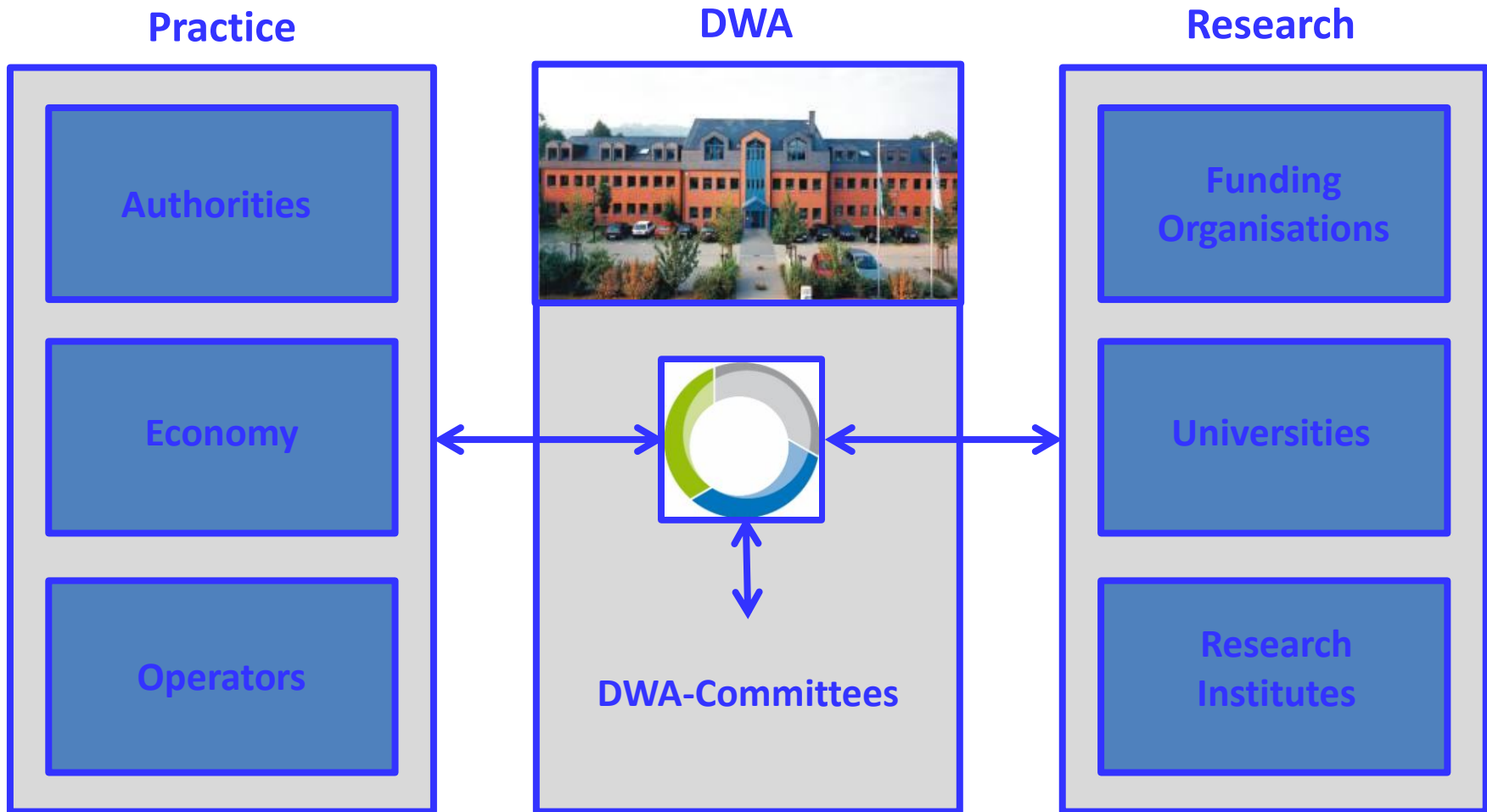
Training

TRAINING

To implement changes and always act accordingly – this is the challenge of education, advanced and further training. We always offer the required knowledge for all levels.

DWA

core competencies



➡ Connection of Research and Practical Use



Rules and
Standards

RULES AND STANDARDS

The Set of Rules and Standards provides security and orientation in the planning, construction, operation and maintenance of water and waste management facilities.



Certification

CERTIFICATION

Inspections and process consultations are also gaining significance in the water and waste sectors. We have defined the processes and assist in their application.

TOPICS: WATER WASTE WASTEWATER

- anthropogenic trace substances
- work and health protection
- education
- soil
- Energy
- development of waterways
- protection of water
- flood
- hydrology
- industrial wastewater
- hydraulic engineering
- legal bases

TASKS:

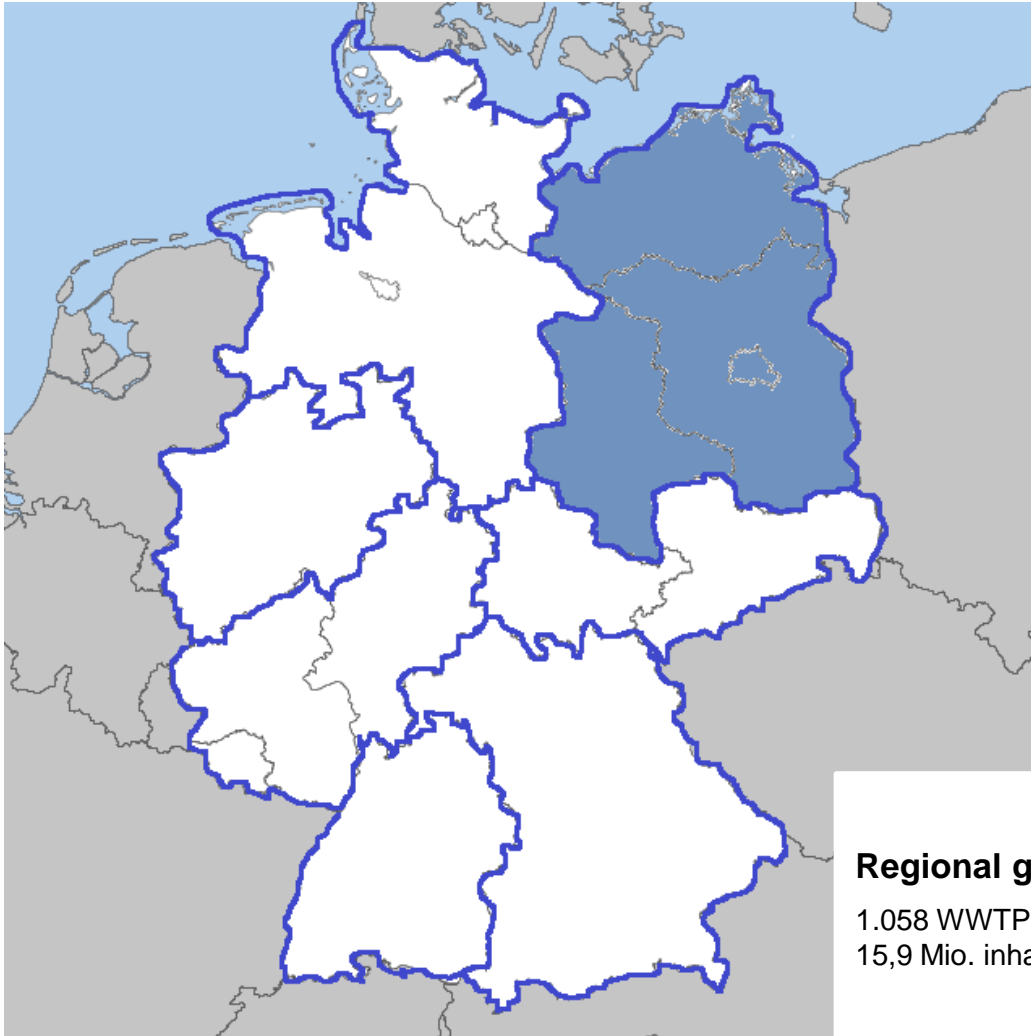
- Sustainable water and waste management
- Promote environmental awareness
- Environmental and Water Protection

Network sewage sludge

Region north-east

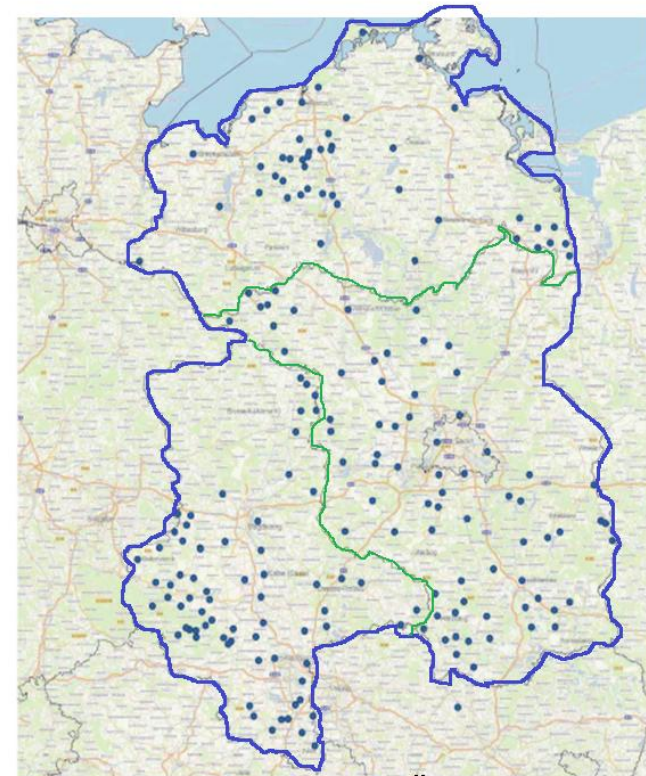


Network sewage sludge



Regional group north-east

1.058 WWTP
15,9 Mio. inhabitants



Sewage sludge network

62 members, 188 WWTP
3 groups (Mecklenburg-Pomerania,
Saxony-Anhalt, Brandenburg/Berlin)

Network sewage sludge

Founded in 2015

62 members

188 WWTP



● **Output:**

Development of a technical-economical sludge recycling concept

- Identification status quo
- thermal or agricultural recycling
 - Capacity of 50.000 inhabitants
- P-recycling
- Synthetic polymers
- Emissions limits

● **Input:**

- Organisation/moderation of regional workshops
- knowledge transfer
- Organisation and performing of networking days
- promote exchange of experts with companies and institutions for water, sewage and waste issues
- Public relations work

- **WP 2** Involving new stakeholders of the water sector to act for better state of the sea
To involve new stakeholders in to Baltic Sea protection work and to promote and develop Baltic Sea Challenge network in the Baltic States
- Stakeholders = WWTP at the baltic sea in Germany
- dissemination event in co-operation with the Baltic Sea Challenge and the BEST project supported with an on-going social media campaign

Large WWTPs at the German baltic sea

WWTP	Design capacity PE	Energy consumption kWh/a	Specific energy consumption kWh/E.a
Rostock	400.000	8.442.084	22,4
Stralsund	100.000		
Bergen	92.000	1.877.149	23,6
Greifswald	90.000	1.680.523	21,7
Grevesmühlen	65.000	686.986	22,3
Lübeck	420.000	9.296.939	20,8
Kiel	425.000	11.781.815	35,3
Flensburg	224.000	7.347.000	46,5

Source: DWA-Leistungsvergleich 2013

- **WP 2** Involving new stakeholders of the water sector to act for better state of the sea
To involve new stakeholders in to Baltic Sea protection work and to promote and develop Baltic Sea Challenge network in the Baltic States
 - Stakeholders = WWTP at the baltic sea in Germany
 - dissemination event in co-operation with the Baltic Sea Challenge and the BEST project supported with an on-going social media campaign
- **WP 3** Capacity Development (CD)
 - 1. to increase capacity of the wastewater treatment sector by organising workshops (WS) and supporting experience exchange, 2. to support WWT sectors lifelong learning by establishing “Baltic Smart Water Hub” “BSWH and 3. to prepare training packages for the “BSWH” concerning Smart sludge and energy management.
 - Workshop “energy production”

- **DWA-events**
 - training, education, practical courses
- Knowledge transfer (local events, conferences, webinar, public relations work) in collaboration with DWA regional groups
- Integration of IWAMA topics/results in existing DWA-courses/network
- Development of new events
 - On-site learning
 - Training and education
 - Information events
- Topics integration in study courses
 - Example: distance learning courses
 - WBBau „water and environment“ at the Leibniz University Hannover
 - Extension to university in the baltic sea region

DWA topics

WATER WASTE WASTEWATER

- anthropogenic trace substances
- work and health protection
- education
- soil
- Energy
- development of waterways
- protection of water
- flood
- hydrology
- industrial wastewater
- hydraulic engineering
- legal bases

Thank you for your attention!

Contact details

German Association for Water, Wastewater and Waste (DWA)

Halberstädter Str. 40a, 39112 Magdeburg

dwa@dwa-no.de, sandrahaase@freenet.de

Tel.: +49 391 / 9901 8292

Fax: +49 391 / 9901 8294